

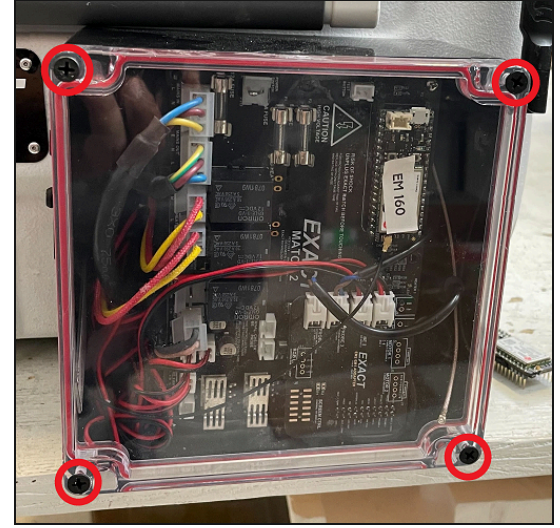
# EM1/EM2 - Modem Replacement



**Disconnect the EM from mains power.**



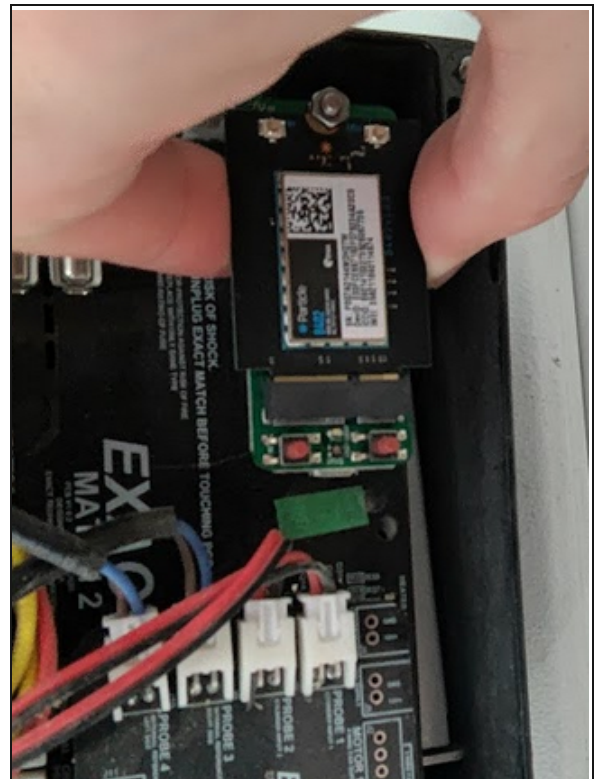
Remove the four screws securing the **Control Box** lid.



Disconnect the antenna from the **CELL** connector.

3

Grab the sides of the **old Modem** PCB and pull straight out.



4

Align the **new Modem** with the buttons oriented toward the middle of the PCB (downwards). Ensure all pins line up with the sockets.



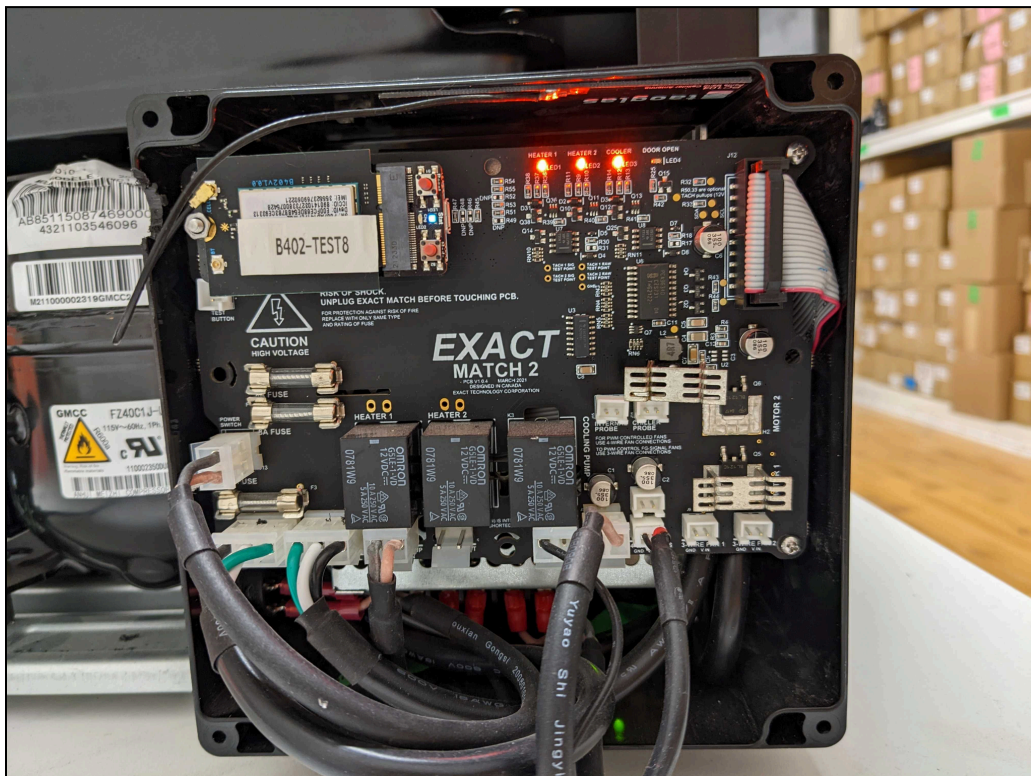
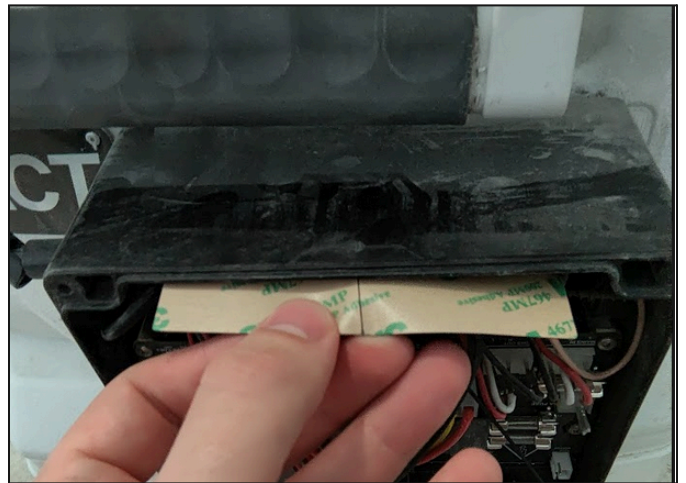
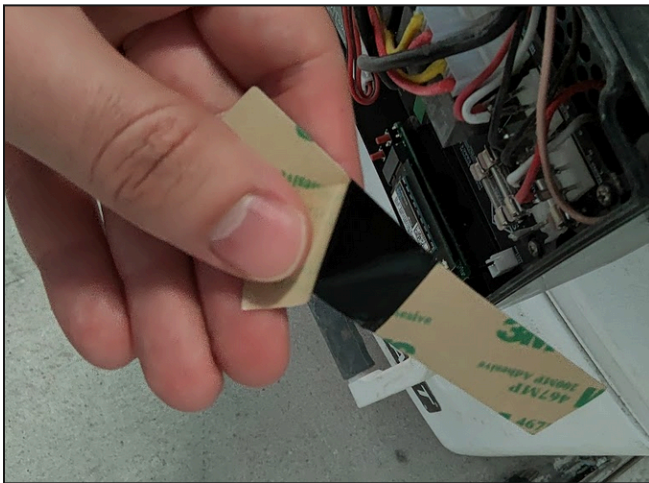
**EXACT**

Press the **new Modem** into place, putting pressure in the marked spots below. Do not put pressure on the black sub-PCB.





- Remove the old antenna from the control box.
- Peel the backing off the adhesive on the replacement antenna.
- Stick the antenna on the top inside surface of the black control box.
- Ensure the new antenna cable is connected to the **CELL** connector on the new Modem.







Reach out to your EXACT contact so they may activate the new modem on Portal and run a test on the EM.

---

**We're here to help.**

**Canada:** +1-647-812-0248

**USA:** +1-302-485-0810

**Australia:** +61-480-088-924

**Email:** [support@exacttechnology.com](mailto:support@exacttechnology.com)